

Communications & Power Industries Helix Traveling Wave Tube



Custom configurations are also available. These variations in the performance and configuration include:

- mechanical configurations
- electrical and RF connections

	FREQUENCY (GHZ)	POWER OUTPUT (MIN)
VTG-6329S1C	2.5 - 8.0	320 W

FEATURES:

- 320 Watts
- 2.5- 8.0 GHz
- PPM Focused
- SMA Input connector
- SC Output Connector
- Coaxial Input
- Coaxial Output
- Weight: 25 lbs. max
- Conduction Cooled
- Any Mounting Position

BENEFITS:

- High efficiency
 - Less prime power required (due to multiple stage collectors)
- PPM focusing

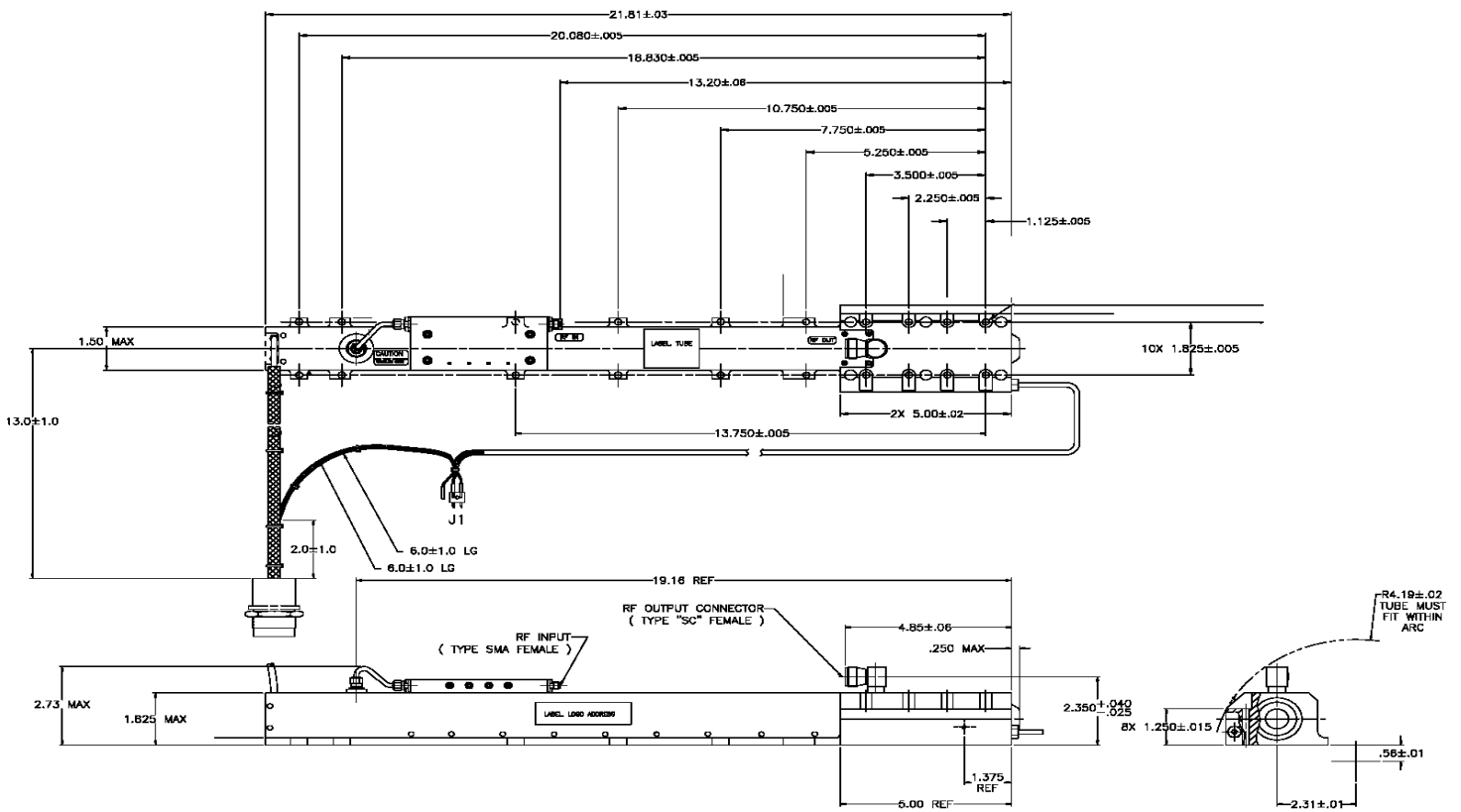
APPLICATIONS:

- Satellite uplinks
- Communications
- Instrumentation
- DBS (Direct Broadcast System)

TYPICAL OPERATING PARAMETERS

	Minimum	Maximum	Typical	Units
Heater Voltage:	6.0	6.4	6.3	Vdc
Heater Current:	2.2	3.0	2.5	A
Helix Voltage:	4.8	5.5	5.15	kV
Helix Current:	---	40.0	20.0	mA
Collector Voltage:	64.0	66.0	65.0	%
Collector Current:	---	575	---	mA
Cathode Warm-up Time	3.0	---	---	Minutes
Drive Power:	---	19	15	dBm
Prime Power:	---	2176	---	Watts
Thermal Dissipation	---	2000	---	Watts
Load VSWR:	---	2.5:1	1.3:1	VSWR

CPI CW Helix Traveling Wave Tube: VTG-6329S1C



**Microwave Power
Products Division**
tel: +1 650-846-2800
email: MPPmarketing@cpii.com
web: www.cpii.com/mpp

For more detailed information, please refer to the corresponding CPI technical description if one has been published, or contact CPI. Specifications may change without notice as a result of additional data or product refinement. Please contact CPI before using this information for system design.

©2020 Communications & Power Industries LLC. Company proprietary; use and reproduction is strictly prohibited without written authorization from CPI.